

Mowrey Gun Works

Makers of Fine Handmade Muzzleloading Guns . . . Since 1963



The Guns of Mowrey –
So Superior You Get a
LIFETIME WARRANTY.

Superior Design – Of the entire muzzleloading era, one design stands above all others for its rugged construction and utterly-reliable functioning: **The Ethan Allen percussion design of 1835.** Though less well known than some “fancier” muzzleloaders of the day, this design was in fact a preferred choice of pioneers in remote areas, where life literally depended on a reliable weapon and where gunsmiths were rarely available.

Ethan Allen was also extremely well known for his pepperbox double-action pocket pistol, sold in such great numbers throughout America’s frontier that his genius for long-gun design is often overlooked today.

But when Mowrey Gun Works, one of the first companies to make muzzleloading reproductions, went into business in 1963, the great Ethan Allen design was chosen over all others as the gun most worthy of reproducing.

Superior Hand Craftsmanship – All Mowrey muzzleloaders are 100% U.S. made, using the finest quality U.S. materials. As they were made in the 19th century, Mowrey today hand crafts each Ethan Allen gun. Even the high-accuracy barrels are produced by the slow “cut rifling” method, whereby each rifling groove is individually cut, using as many as 20 passes per groove. Stocks are shaped and finished by hand, giving each gun a one-of-a-kind custom look.

Important to muzzleloading enthusiasts, Mowrey’s authentic design and authentic hand crafting results in a gun of great beauty, accuracy and reliability – one you’ll be proud to own, whether for display, hunting or target shooting. Yet Mowrey muzzleloaders are priced competitively with guns that are mass-produced on automatic machinery. And best of all, Mowrey’s **Lifetime Warranty** gives you total assurance of full satisfaction with your purchase.



NEW - Mowrey's ETHAN ALLEN SQUIRREL RIFLE.

This new model fills a long-felt need among black-powder shooters for an easier-handling more compact rifle. Though only 43 inches in overall length and weighing only seven pounds, the Squirrel Rifle has the accuracy and shooting qualities of a full-size plains rifle. It's **very** handy for long hunting treks or for brushy terrain. Lighter weight makes it ideal for young shooters and women, too. Choose from .36 or .45 caliber. 28-inch barrel is 13/16-inch in diameter. Beautiful curly maple stocks are standard on this model.

Mowrey's ETHAN ALLEN PLAINS RIFLE

This is the big-bore, heavy plains rifle our forefathers used for bringing down large western game. 48 inches in overall length, the 32-inch octagon barrel is a full one inch in diameter. It weighs 10 pounds and is available in .50 or .54 caliber. Standard stocks are premium-grade northern cherry. Curly maple (shown) is available at slight extra cost.

Mowrey's ETHAN ALLEN SHOTGUN.

This well-balanced 12-gauge muzzleloader won a first place at the Friendship, Indiana NMLRA National Championships. Weighing 7½ pounds, the 32-inch barrel is octagon all the way, and shoots a modified pattern. Length of pull is 14½ inches. Standard 12-gauge wads work well in this gun. Overall length is 48 inches. Premium-grade northern cherry wood stocks are standard. Curly maple stocks (shown) are available at slight extra cost.

SEE BACK COVER FOR COMPLETE FEATURES OF THESE MOWREY MUZZLELOADERS.

Build Your Own Muzzleloader With Mowrey's Semi-finished Gun Kits.

All Mowrey guns are available in kit form. A satisfying, low-cost way to create your own muzzleloader, with custom touches that are uniquely yours. Complete step-by-step instructions will provide you many pleasant hours of enjoyment as you make a family heirloom you'll be proud to display. Stocks are pre-fitted and rough sanded, ready for you to add your custom finish to this beautiful wood.



MOWREY MUZZLELOADER

All Mowrey muzzleloaders are 100% U.S. made at Mowrey Gun Works in Iowa Park, Texas, using the finest quality U.S. materials. All are individually hand crafted and hand fitted, including the barrels, in the same manner as the original 1835 designs by Ethan Allen.

All guns are percussion, muzzleloading, single-shot.

All guns have box lock actions. All working parts are cast steel, heat treated to 46 Rockwell C hardness. Tumblers and triggers are carbon steel, deeply case hardened. Simplicity of design is accomplished by the use of only five moving parts - trigger, tumbler, hammer and 2 springs, all enclosed in a solid Inco brass housing. This same rugged housing also serves as the wrist of the stock, breech plug and nipple seat.

Three New Design Features Have Been Added to All Mowrey Guns:

1. The tumbler is now bridled - supported with bearings on both sides of the housing, for smooth long-wearing action.
2. A new solid-steel breech plug greatly increases the overall strength of the guns.
3. Fully-adjustable trigger, easily and quickly set to any pull desired.

	Squirrel Rifle	Plains Rifle	12-Ga. Shotgun
Calibers:	.36 & .45	.50 & .54	12 gauge (.728)
Overall Length:	43"	48"	48"
Barrel:	13/16" x 28", browned. Full octagon.	1" x 32", browned. Full octagon.	1" x 32", browned. Full octagon.
Total Weight:	7 lbs.	10 lbs.	7 1/2 lbs.
Stocks:	Premium Grade hand-rubbed curly maple.	Premium Grade hand-rubbed northern cherry (curly maple on special order.)	Premium Grade hand-rubbed northern cherry (curly maple on special order.)

All stocks are hand formed and fitted, with 10 hand-rubbed coats of oil.

Trigger: Fully adjustable. In seconds, a Mowrey trigger can be adjusted just the way you want it - from sturdy hunting pull to fine, light target pull. With 1/16" Allen wrench, simply turn the creep-screw to suit you. No lock parts to disassemble. Remove side plate only to adjust.

Rifling: All barrels are made of special low-carbon steel, starting with CD-12L14 cold-finished bars, with high tensile strength (87,500 PSI). Mowrey employs the best method known for making high-accuracy black-powder muzzleloading barrels - the slow, precise "cut rifling" method. Using this cut rifling method, each groove is cut separately and precisely, using up to 20 separate passes **per groove**; producing 8 equal-width lands and grooves. 1 turn in 60", cut .012" deep on .50 and .54 calibers. (.010" on .36 and .45 calibers). Bottom of each rifling groove has a .015" radius in each corner to inhibit fouling and permit easier cleaning. This combination of more grooves (8), cut .012" deep, with relatively slow twist, maintains keen accuracy even under heavy charges, resisting stripping and permitting more shots between cleanings.

Furniture: All guns feature polished Inco high-density brass, cast from pure ingots (not scrap) for butt plate, trigger guard and action housing.

Sights: German silver front blade, with adjustable buckhorn rear sight. Dovetails in barrel are cut .375" for substituting modern sights when desired. (Shotgun has 1/8" brass bead front sight.)

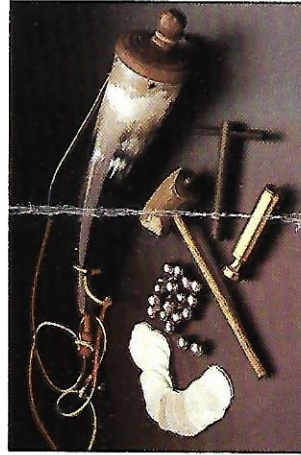
Warranties: All Mowrey guns are sold with three unique customer-satisfaction assurances:
1. After purchase of a gun from the Mowrey plant, customer may return it within 30 days for a full refund of the purchase price, if for any reason the customer is not satisfied with the gun's performance.

2. Mowrey guns are **warranted for life** against defects in materials and workmanship.

3. At no charge and at any time, Mowrey gun owners may obtain from the factory small parts that may have been defective or broken - screws, springs, pins, trigger and tumbler.



Mowrey Gun Works, Inc.
P.O. Box 28 -
Iowa Park, Texas 76367
(817) 593-2331/2186



MOWREY'S MUZZLELOADER ACCESSORIES

Everything you need, except black powder and caps, to shoot your Mowrey muzzleloader - powder horn, powder measure, pre-cut patches, ball shot, ball starter and nipple wrench. Obtain powder and caps from your gun dealer, and with these basic accessories, you're ready to go!

New! ALL-STEEL VERSIONS OF MOWREY MUZZLELOADERS.

Mowrey's Squirrel Rifle, Plains Rifle and 12-gauge Shotgun in **all steel versions**, are now in production. Specifications are the same as those for Mowrey brass guns shown at left, except:

1. **Steel** replaces all brass components (for shooters preferring the stronger, more traditional non-glare browned steel, rather than the polished brass of Mowrey's standard line).
2. Beautifully-figured, hand-rubbed curly maple stocks are **standard** on these new guns.

